

[瞬 时 永 恒]

【 奇 观 处 彰 显 华 贵 。 】

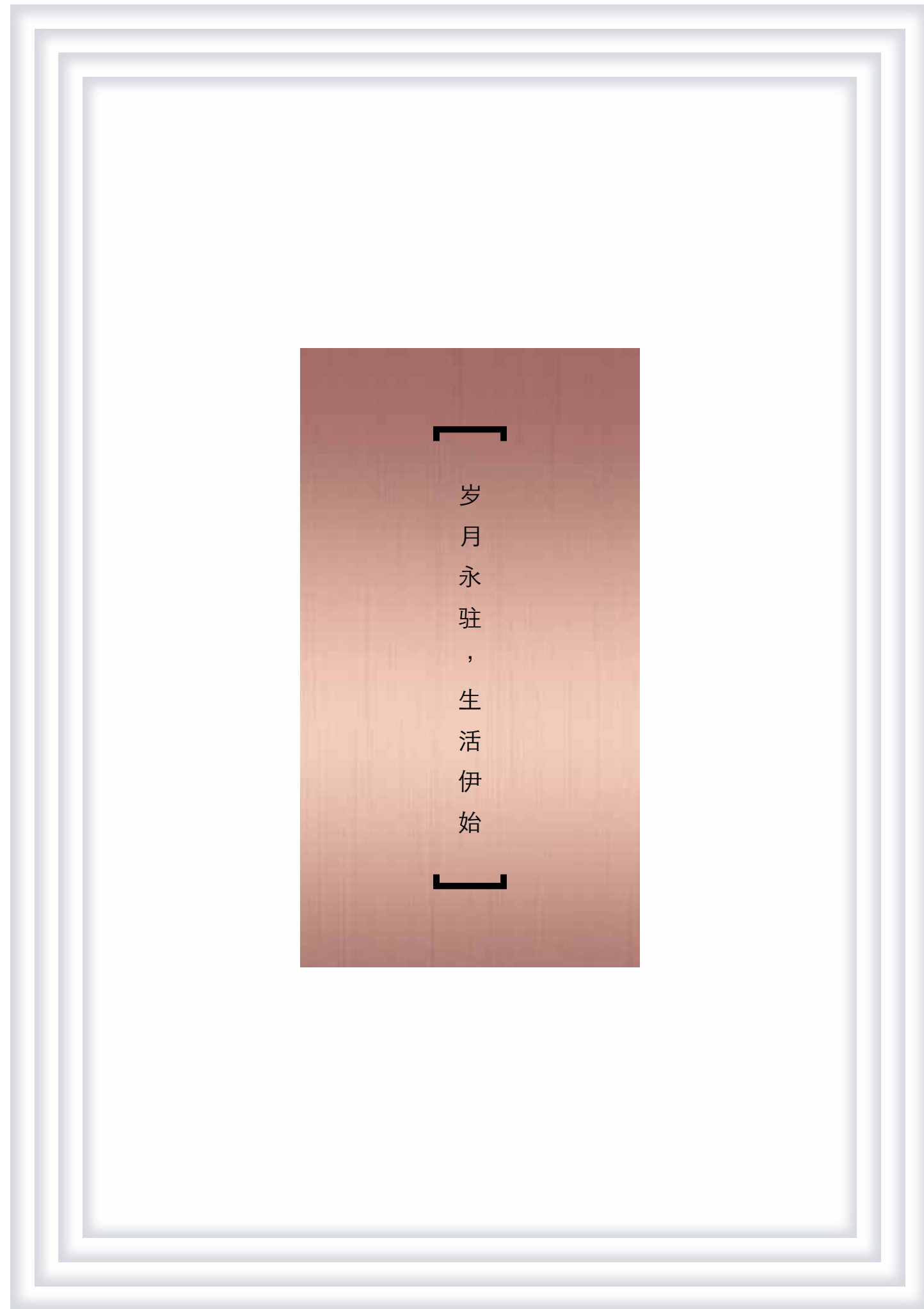
受到大自然梯田地貌的启发，绿墩雅苑将此奇观的特点融入了建筑设计之中。被青翠绿植覆盖之纵横交错的梯田，丰盈的水倾泻而下，地势连绵起伏突出了永恒的主题特点。富有创意的建筑艺术与独一无二的有机材料完美融合，汇成一致的设计语言，彰显华贵。



灵感空间，令人着迷。

提升您卓尔不凡之感官享受。沉醉于精巧的水边花园及赏心悦目，不断延伸的园林景观，您将感受美妙绝伦的度假体验。体会世界上最精致的度假胜地的气氛，每一天，离家咫尺之遥，便可聆听大自然悦耳动听的私语。







享受生活，品味生活



置身于城市中心地带，这里是鉴赏家与国际精英的聚集地。在这里您可以品味奢华，时光与您相伴，可畅叙商事，亦可休闲放松。近在咫尺的城市中心购物街是您的购衣首选，仅数分钟车程即可抵达您心仪的各种高档娱乐项目。享受世界，随心而动。

终身保有权，地理位置绝佳，心向往之。

坐落在礼敦岭，地处于高级私宅区，令人梦寐以求的第十区是你的家。陶醉于稀缺而奢华宽敞的住宅，您将拥有终身保有权，世代相传，以及一个高贵典雅，超越时空的家。



District 10

Map not drawn to scale.

【生活、工作和娱乐设施，一应俱全。】



地理位置极其优越，城市中心、乌节路和城市商业中心驾车数分钟即可达；坐拥南洋小学和莱佛士南女子小学等顶尖学校的教学资源。绿城雅苑离纬壹科技城(Biopolis)和启汇园(Fusionpolis)仅咫尺之遥，为在生物科技领域工作的住户上下班提供了极大的交通方便。

【 城市主要地区，尽收眼底。 】



武吉知马
高档私宅区

华侨中学

莱佛士女
子小学

南洋小学

新加坡
植物园

LEEDON
GREEN

滨海湾
金沙娱乐城

中央商
务区

丹戎巴葛

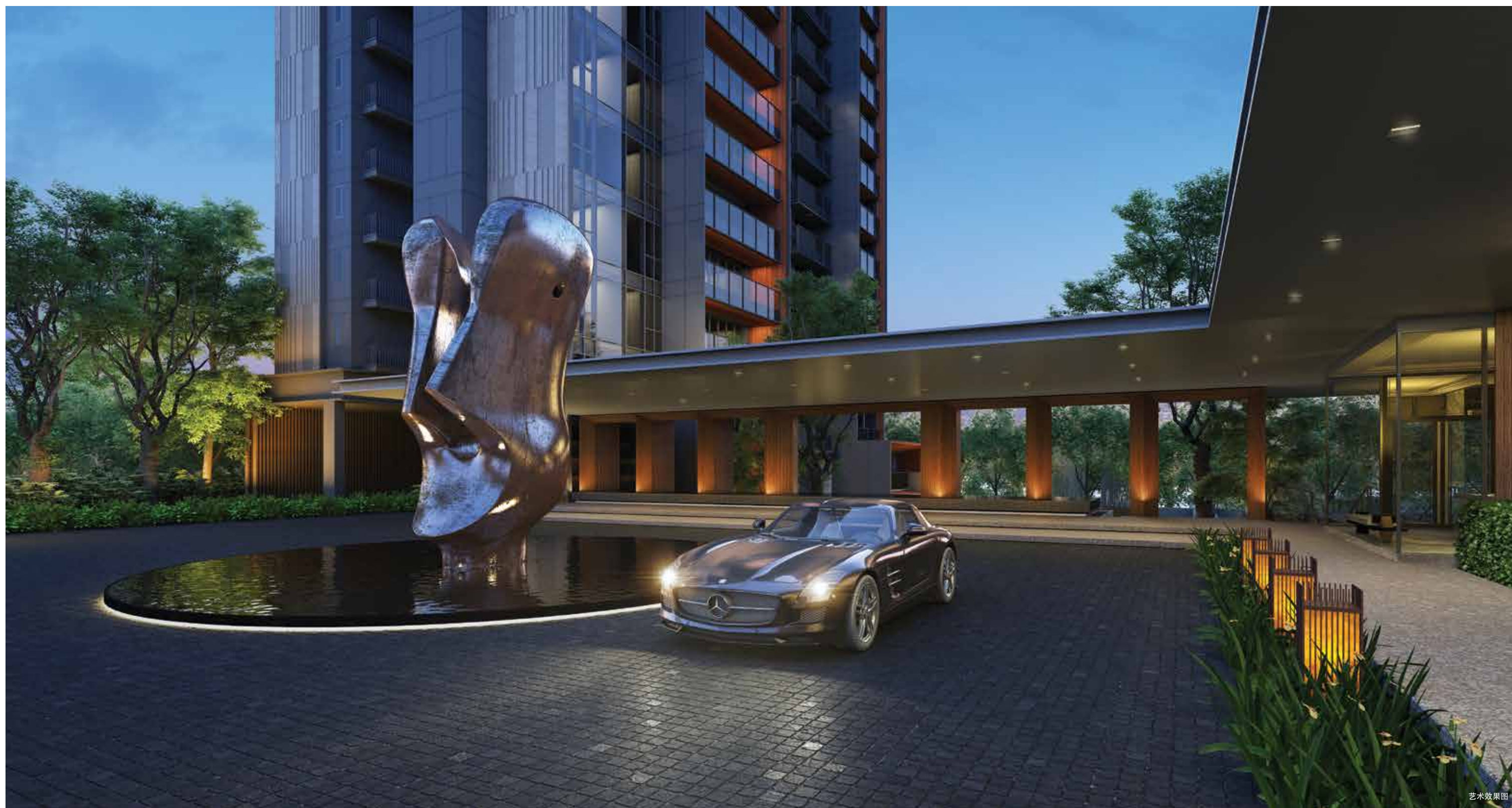
圣淘沙

登普西山

乌节路

【 归家归心，享受奢华。】

醉心于这样一个高品质的环境，生活质量显著提升，您将远离尘世的喧嚣，拥有向往的生活体验。入口大厅处精巧的一线禅设计与水流的平衡统一，给来宾营造了宁静祥和的气氛。



【 尽享空间奢华。 】

绿敦雅苑会为您带来一场精心策划的开阔空间和展示园林景观的旅程，同时兼顾天然美景的观赏度与舒适度。它体现了大胆的住宅设计理念，并充分利用广阔的户外空间以营造一个积极向上的氛围。树木与植被葱葱茏茏，枝繁叶茂。这是一个精雕细琢，景观地貌层层叠加，高低起伏的绝美场景。娱乐空间、私人亭苑及精心策划的秘密花园点缀其中。



艺术效果图

设计构成与自然奇观

相映成趣



艺术效果图

绿墩雅苑由7座独立的住宅楼组成，共有638套1至4卧的公寓房及5套花园别墅。绿墩雅苑围合出宽阔的户外空间，使您与大自然亲密接触，给您带来平安宁静的享受，仿佛置身于度假屋般悠闲愉悦。天然坚固的材料展现了建筑的优雅与和谐的美感，使您足不出户也可感受假日休闲。



艺术效果图



图片仅供参考

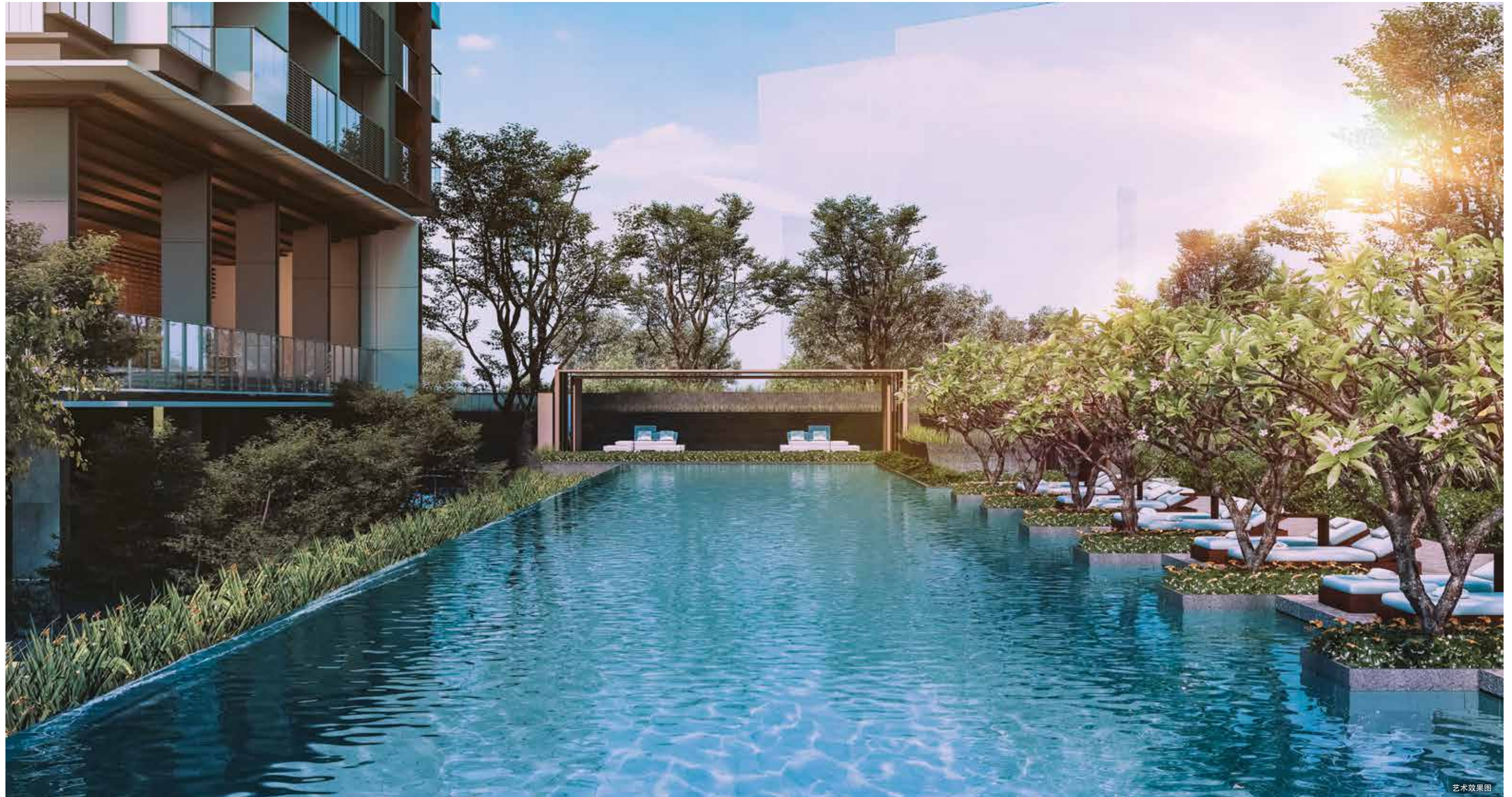
「

内外兼修，身心兼备

」

设施精美，感受高端奢华的休闲体验。

风景如画，令人沉醉，此处的绿化经过精心打造，呈现出一幅幅心旷神怡的景象——白天，阳光从树木的枝叶中穿过，一步一景，移步换景，您可以走出家门，尽情欣赏自然美景。被葱郁的植被环抱，绿色的天然“遮篷”，能让您在各式泳池中尽情放松休息，消除疲劳。

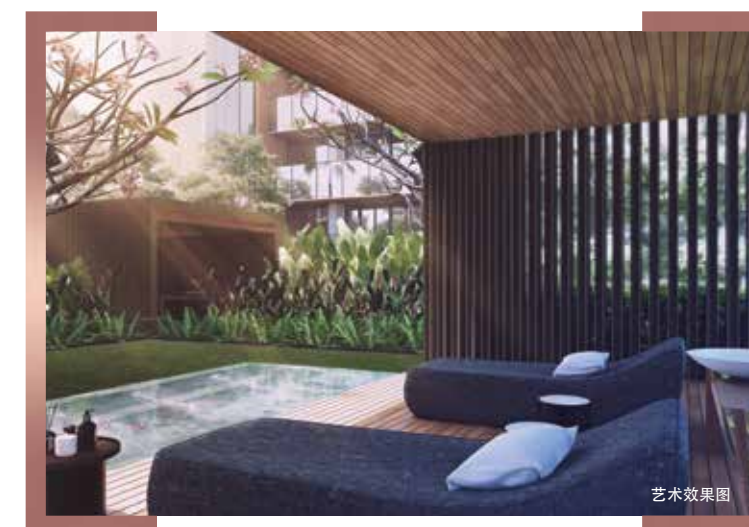


艺术效果图



艺术效果图

主题亭阁 ——
庆祝人生欢乐时刻



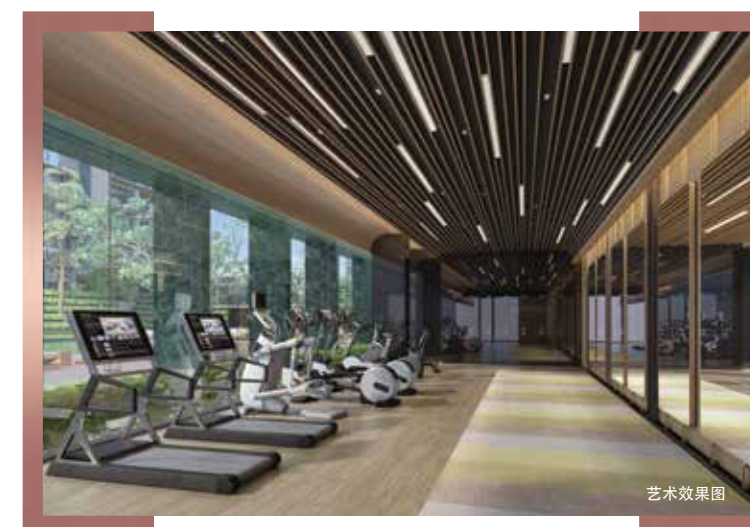
艺术效果图

主题亭阁配备了高端齐全的休闲设施，同时融合设计师精妙独到的设计品味，显然成了家庭聚会、娱乐休闲和户外聚餐的绝妙去处。你会亲身感受到宾至如归的无限温暖，在一片绿意盎然中庆祝人生的美好时刻。



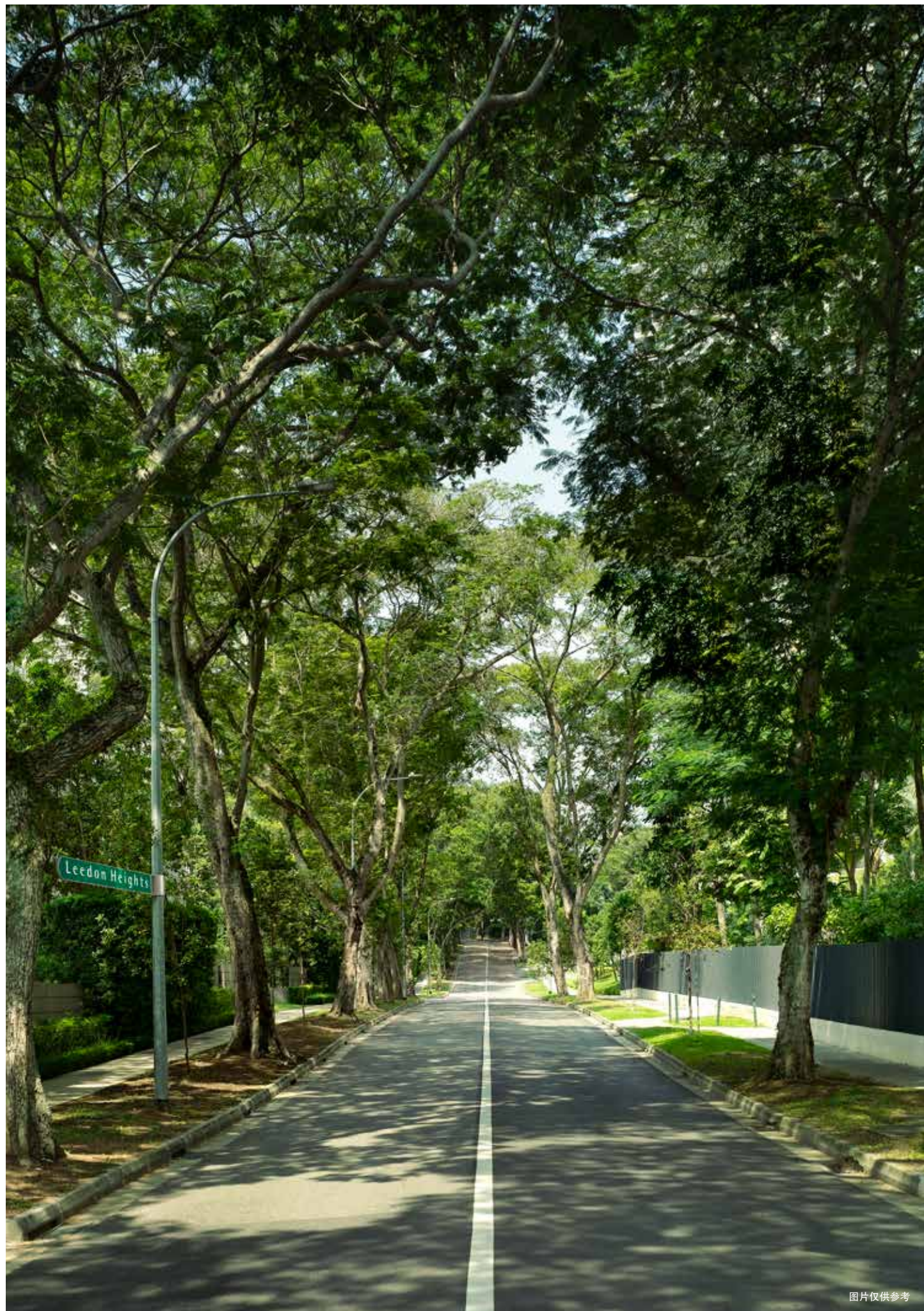
艺术效果图

会所场地共享，
沉醉徜徉



艺术效果图

雅致的社交场所，可会友，可交际。宁静的氛围加上秀美风景，
欢迎亲朋好友的到来。



图片仅供参考

回家之路，
绿树成荫，
浑然天成



设计理念鲜明大胆，
现代风格优雅从容



倍享舒适的生活中处处见奢华。独一无二的大餐厅将家庭娱乐提高到了一个全新的高度。所有的细节呈现就像一个精心编排的交响曲。从前厅至住宅，住户足之所至，无不精心设计，以追求完美。这一切从礼宾部的迎宾招待开始。热情洋溢，体贴入微，前台随时为您服务。

阐释空间，定制生活。

优雅而密切，宽敞的生活空间带给感官一种素净的美，令都市人神往。白天拥享自然光，细微之处见美感及和谐，精选住宅独享私人电梯。



图片仅供参考



图片仅供参考

精致烹饪，味觉盛宴



图片仅供参考

开放式厨房面向餐厅，厨师与用餐者在此各得其乐。厨房设备为顶尖品牌V-Zug，住户可似专业烹饪师般，参照美食家菜谱烹制招待贵宾，日常烹食自然不在话下。



图片仅供参考

布局巧妙周到，
处处可见宁静与安逸。



图片仅供参考

现代设计营造了舒适慵懒的氛围，传递了一份从容与静谧。高贵典雅的空间令人安逸，保证最佳睡眠质量。洗漱间设施配备设计师系列品牌。



「
感
受
卓
越
」

【 别墅体验，独一无二。 】

限量版花园别墅，仅5户。

设计理念强调每栋有其独特的风格与创意，室内外宽敞的私人阳台及露台完美融合。秉承开放性的理念，做到了室内空间流畅地延伸至葱郁的景观花园并巧妙定位，周边美景，尽收眼底。



倾其一生，尽情享用。

接受一种大胆全新的别墅概念。

象下回到家时时处处感受到的精致细节。欣赏一份追求完美极致服务的坚定决心。迎合你的生活方式为你定制一个世界。为你揭示有识之士选择别墅栖身的原因所在。



艺术效果图

【 精致住宅邂逅智能生活。 】

【 顶级器具，功能性不言而喻。 】



智能家居

进出大门配有P/T摄像头
Day-to-night home monitoring with playback capability

生物电子密码锁
正门设闯入及低电池提醒

空调控制
远程空调控制，节能省电



智能访客服务

二维码访客录入
快速而简便的访客进入系统

视频电话
进门前与访客视频通话沟通



智能社区

人流量监测
时时掌握绿墩雅苑公共区域的人流量情况

场所预定
动动手指，即可计划活动，预定场所

智能包裹柜
使用唯一密码储存您的包裹

车辆季节停车应用
住户使用绿墩雅苑停车设施，停车变得简单



图片仅供参考

全面远程网关

智能家居技术通过远程自动管理系统保证日常安全与生活便利。一切尽在掌控之中。从默认已安装功能开始，住户可根据不同生活方式，逐渐从众多的智能拓展选项中添加更多功能。

智能镜子

一些住宅厨房配备智能镜子，转化为带有漂亮界面的数字触摸屏。迅速链接您最喜爱的站点，在Instagram上查询最新消息，或者在YouTube上观看烹饪教程，准备家庭美食。



图片仅供参考



图片仅供参考



图片仅供参考



图片仅供参考



图片仅供参考



图片仅供参考

所有的住宅都按照极高标准安装及完善，关注不同安装条件下的细节，并制定定制化方案。设计师流线型设计方案保证了出色的功能智能镜子性，一流品牌保证了较高的品质，令人惊艳。



NETFLIX



YouTube



ernestomeda

LIEBHERR



antoniolupi

AXOR

hansgrohe

[平面图]

图例

一楼:

- 1 迎宾处
- 2 主题庭院
- 3 草坪
- 4 绿荫步道
- 5 森林烧烤亭
- 6 入口接待亭
- 7 宴会厅
- 8 健身房
- 9 Spa亭
- 10 泳池平台
- 11 豪华泳池
- 12 灯笼平台
- 13 戏水池平台
- 14 戏水池
- 15 戏水池草坪
- 16 大树烧烤亭
- 17 人行侧门
- 18 泳池
- 19 安闲亭
- 20 静逸亭
- 21 发电机组
- 22 变电站及垃圾站
- 23 足底按压步行道
- 24 车辆进出口
- 25 警卫亭

地下层:

- 26 网球场
- 27 游乐场
- 28 水疗泳池
- 29 足疗
- 30 按摩浴缸
- 31 水边休憩区

天空露台:

- 32 天空露台吧
- 33 家庭小屋



[1 卧]

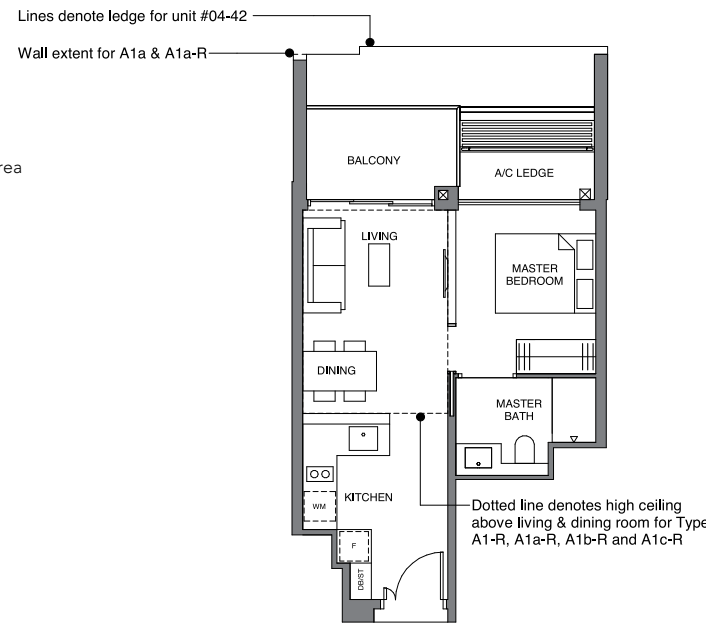
TYPE A1
44 sqm | 474 sq ft

BLOCK 32
#02-33 to #11-33

TYPE A1-R
56 sqm | 603 sq ft

Incl. of 12 sq m | 129 sq ft of void area (high ceiling) above living & dining

BLOCK 32
#12-33



TYPE A1a
44 sqm | 474 sq ft

BLOCK 32
#02-25* to #11-25*

BLOCK 34
#04-42 to #11-42

TYPE A1a-R
56 sqm | 603 sq ft

Incl. of 12 sq m | 129 sq ft of void area (high ceiling) above living & dining

BLOCK 32
#12-25*

BLOCK 34
#12-42

TYPE AS1
50 sqm | 538 sq ft

BLOCK 26
#02-08 to #12-08

BLOCK 28
#03-16 to #11-16

TYPE AS1-R
63 sqm | 678 sq ft

Incl. of 13 sq m | 140 sq ft of void area (high ceiling) above living & dining

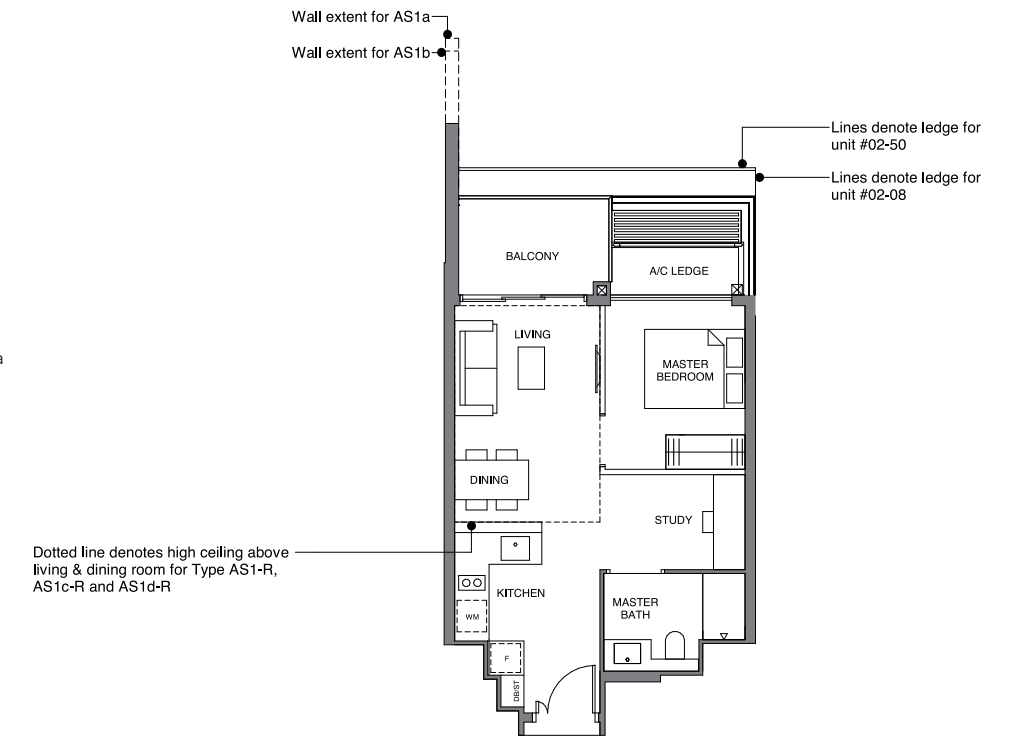
BLOCK 28
#12-16

TYPE AS1a
50 sqm | 538 sq ft

BLOCK 38
#01-58 to #12-58

TYPE AS1b
50 sqm | 538 sq ft

BLOCK 36
#01-50 to #12-50



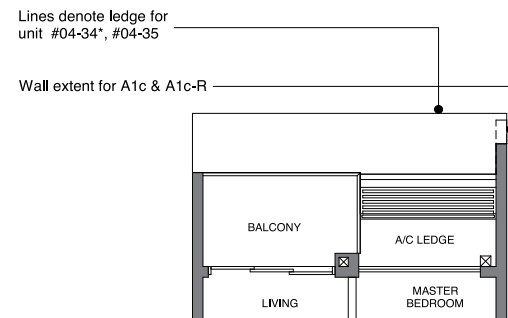
TYPE A1b
44 sqm | 474 sq ft

BLOCK 34
#04-35 to #11-35

TYPE A1b-R
56 sqm | 603 sq ft

Incl. of 12 sq m | 129 sq ft of void area (high ceiling) above living & dining

BLOCK 34
#12-35



TYPE A1c
44 sqm | 474 sq ft

BLOCK 34
#04-34* to #11-34*

TYPE A1c-R
56 sqm | 603 sq ft

Incl. of 12 sq m / 129 sq ft of void area (high ceiling) above living & dining

BLOCK 34
#12-34*

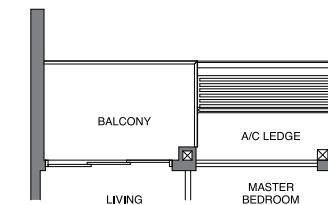
TYPE AS1c
50 sqm | 538 sq ft

BLOCK 30
#02-17* to #11-17*

TYPE AS1c-R
63 sqm | 678 sq ft

Incl. of 13 sq m | 140 sq ft of void area (high ceiling) above living & dining

BLOCK 30
#12-17*



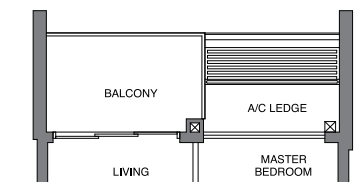
TYPE AS1d
50 sqm | 538 sq ft

BLOCK 32
#02-32 to #11-32

TYPE AS1d-R
63 sqm | 678 sq ft

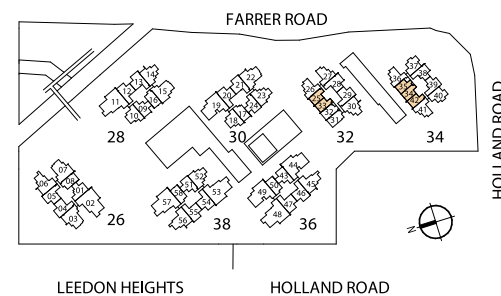
Incl. of 13 sq m | 140 sq ft of void area (high ceiling) above living & dining

BLOCK 32
#12-32



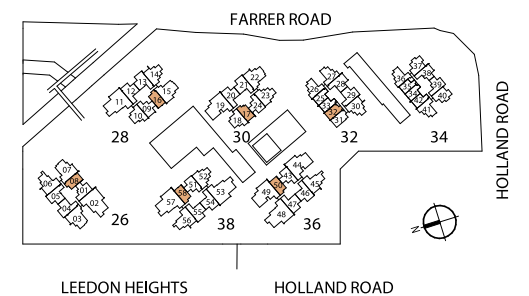
DB/ST: Distribution Board / Storage
F: Fridge
WM: Washer Cum Dryer
* Denotes mirror image

Area includes PES, A/C ledge, balcony and void area (high ceiling). The plans are subject to change as may be required or approved by the relevant authorities. Areas are approximate measurements only and are subject to final survey. Plans are not drawn to scale and do not form part of the contract.



DB/ST: Distribution Board / Storage
F: Fridge
WM: Washer Cum Dryer
* Denotes mirror image

Area includes PES, A/C ledge, balcony and void area (high ceiling). The plans are subject to change as may be required or approved by the relevant authorities. Areas are approximate measurements only and are subject to final survey. Plans are not drawn to scale and do not form part of the contract.



[1卧 + 书房]

[2卧]

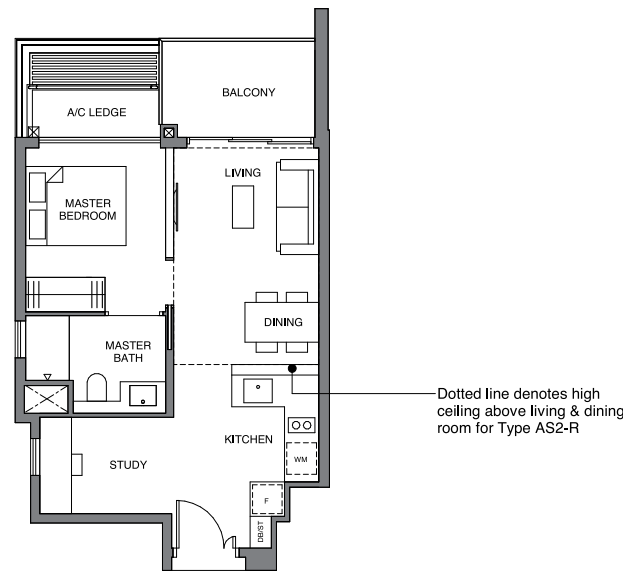
TYPE AS2
50 sqm | 538 sq ft

BLOCK 32
#02-31 to #11-31

TYPE AS2-R
63 sqm | 678 sq ft

Incl. of 13 sq m | 140 sq ft of void area (high ceiling) above living & dining

BLOCK 32
#12-31



Dotted line denotes high ceiling above living & dining room for Type AS2-R

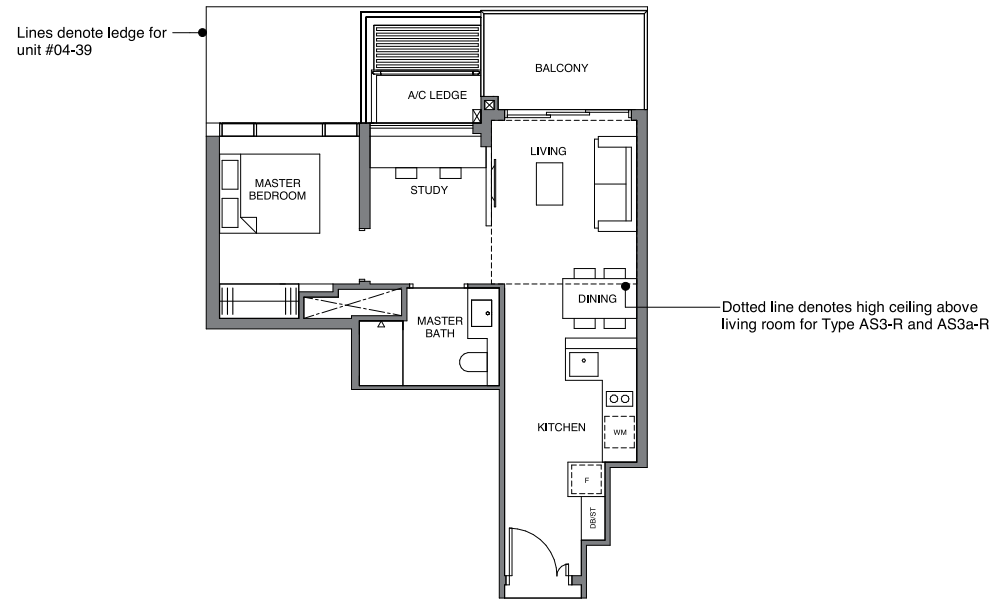
TYPE AS3
54 sqm | 581 sq ft

BLOCK 34
#04-39 to #11-39

TYPE AS3-R
64 sqm | 689 sq ft

Incl. of 10 sq m | 108 sq ft of void area (high ceiling) above living

BLOCK 34
#12-39



Dotted line denotes high ceiling above living room for Type AS3-R and AS3a-R

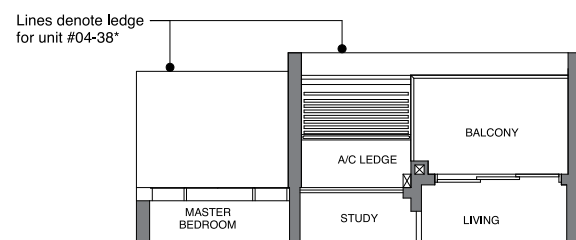
TYPE AS3a
54 sqm | 581 sq ft

BLOCK 34
#04-38* to #11-38*

TYPE AS3a-R
64 sqm | 689 sq ft

Incl. of 10 sq m | 108 sq ft of void area (high ceiling) above living

BLOCK 34
#12-38*



Lines denote ledge for unit #04-38*

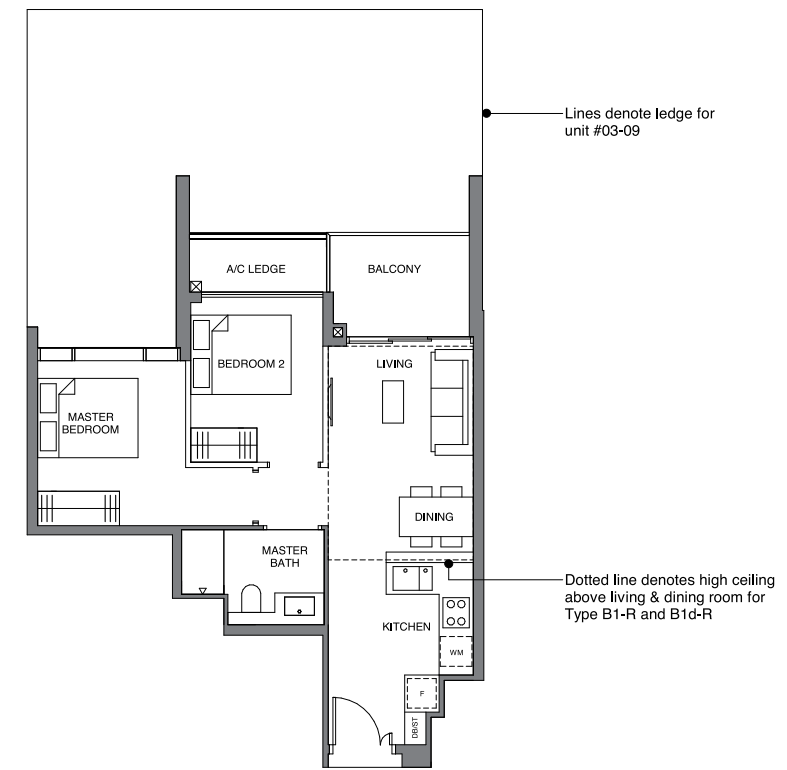
TYPE B1
57 sqm | 614 sq ft

BLOCK 28
#03-09 to #11-09

TYPE B1-R
70 sqm | 753 sq ft

Incl. of 13 sq m | 140 sq ft of void area (high ceiling) above living & dining

BLOCK 28
#12-09



Lines denote ledge for unit #03-09

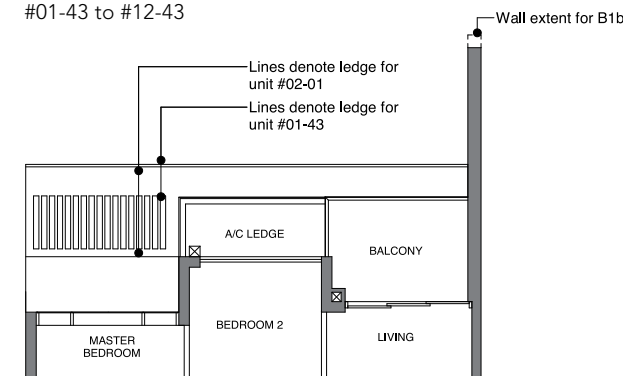
Dotted line denotes high ceiling above living & dining room for Type B1-R and B1d-R

TYPE B1a
57 sqm | 614 sq ft

BLOCK 26
#02-01 to #12-01

TYPE B1b
57 sqm | 614 sq ft

BLOCK 36
#01-43 to #12-43



Lines denote ledge for unit #02-01

Lines denote ledge for unit #01-43

Wall extent for B1b

TYPE B1c
57 sqm | 614sq ft

BLOCK 38
#01-51 to #12-51

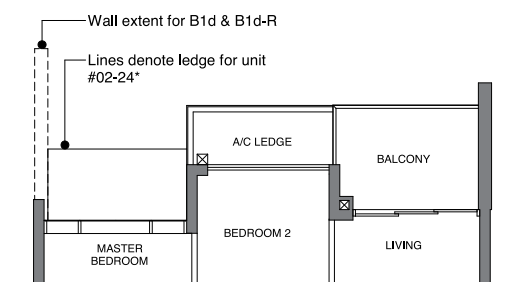
TYPE B1d
57 sqm | 614 sq ft

BLOCK 30
#02-24* to #11-24*

TYPE B1d-R
70 sqm | 753 sq ft

Incl. of 13 sq m | 140 sq ft of void area (high ceiling) above living & dining

BLOCK 30
#12-24*

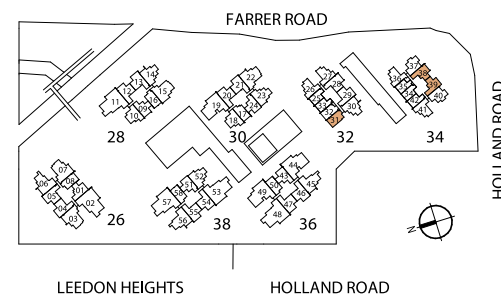


Wall extent for B1d & B1d-R

Lines denote ledge for unit #02-24*

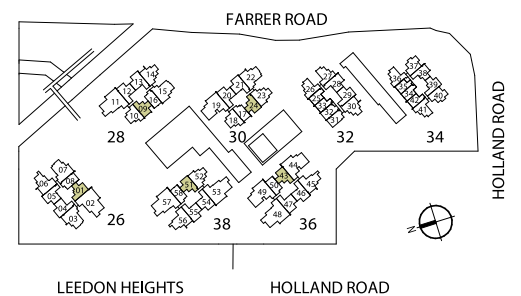
DB/ST: Distribution Board / Storage
F: Fridge
WM: Washer Cum Dryer
* Denotes mirror image

Area includes PES, A/C ledge, balcony and void area (high ceiling). The plans are subject to change as may be required or approved by the relevant authorities. Areas are approximate measurements only and are subject to final survey. Plans are not drawn to scale and do not form part of the contract.



DB/ST: Distribution Board / Storage
F: Fridge
WM: Washer Cum Dryer
* Denotes mirror image

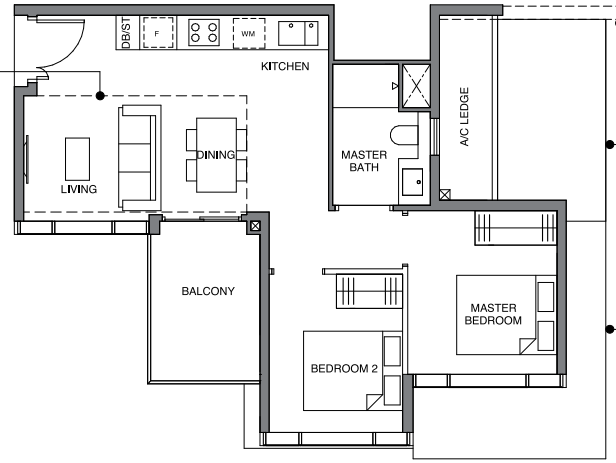
Area includes PES, A/C ledge, balcony and void area (high ceiling). The plans are subject to change as may be required or approved by the relevant authorities. Areas are approximate measurements only and are subject to final survey. Plans are not drawn to scale and do not form part of the contract.



TYPE B2
62 sqm | 667 sq ft

BLOCK 34
#04-40 to #11-40

Dotted line denotes high ceiling above living & dining room for Type B2-R and B2a-R



TYPE B2-R
73 sqm | 786 sq ft

Incl. of 11 sq m | 118 sq ft of void area (high ceiling) above living & dining

BLOCK 34
#12-40

Wall extent for B2a

Lines denote ledge for unit #04-37*

Lines denote ledge for unit #04-40

TYPE B2a
62 sqm | 667 sq ft

BLOCK 34
#04-37* to #11-37*

TYPE B2a-R
73 sqm | 786 sq ft

Incl. of 11 sq m | 118 sq ft of void area (high ceiling) above living & dining

BLOCK 34
#12-37*

TYPE B3
65 sqm | 700 sq ft

BLOCK 28
#03-10 to #11-10

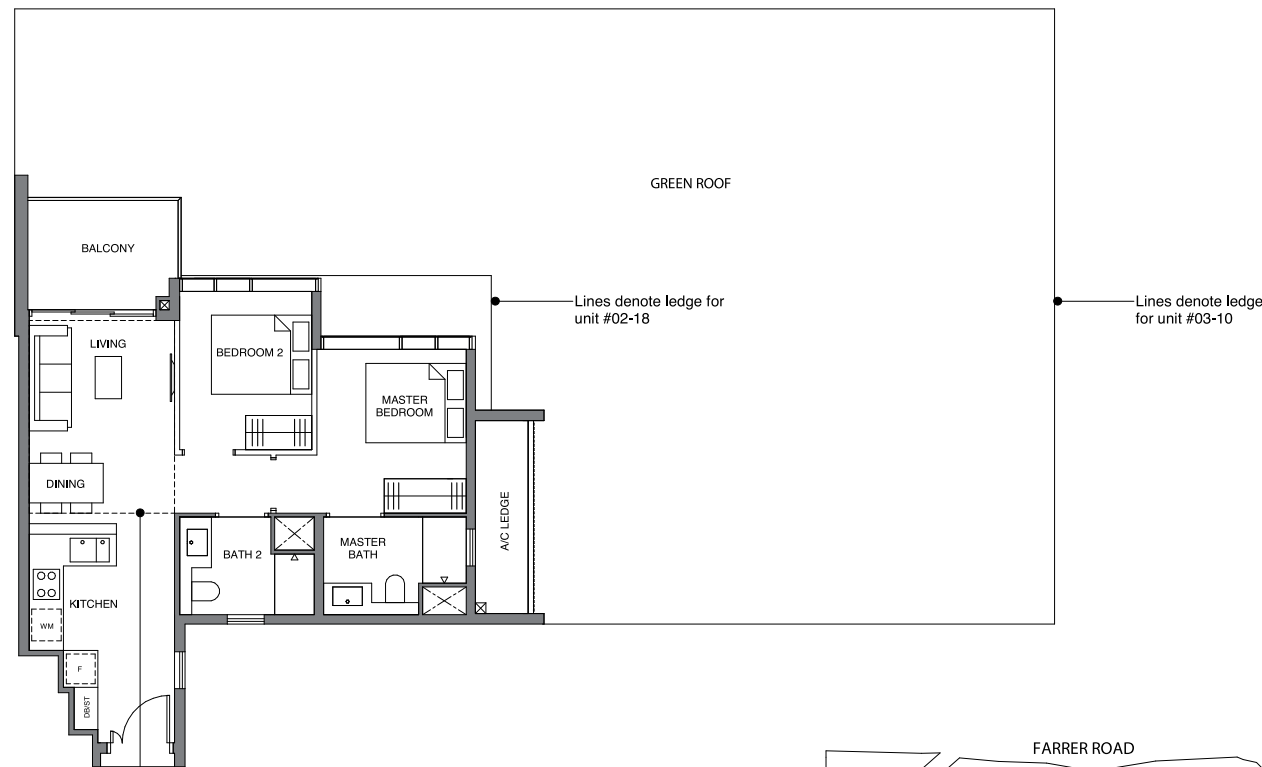
BLOCK 30
#02-18 to #11-18

TYPE B3-R
76 sqm | 818 sq ft

Incl. of 11 sq m | 118 sq ft of void area (high ceiling) above living and dining

BLOCK 28
#12-10

BLOCK 30
#12-18



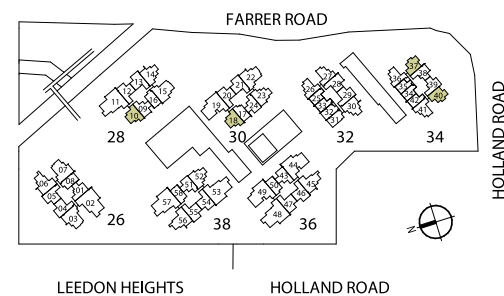
Lines denote ledge for unit #02-18

Lines denote ledge for unit #03-10

Dotted line denotes high ceiling above living & dining room for Type B3-R

DB/ST: Distribution Board / Storage
F: Fridge
WM: Washer Cum Dryer
* Denotes mirror image

Area includes PES, A/C ledge, balcony and void area (high ceiling). The plans are subject to change as may be required or approved by the relevant authorities. Areas are approximate measurements only and are subject to final survey. Plans are not drawn to scale and do not form part of the contract.



TYPE B4
65 sqm | 700 sq ft

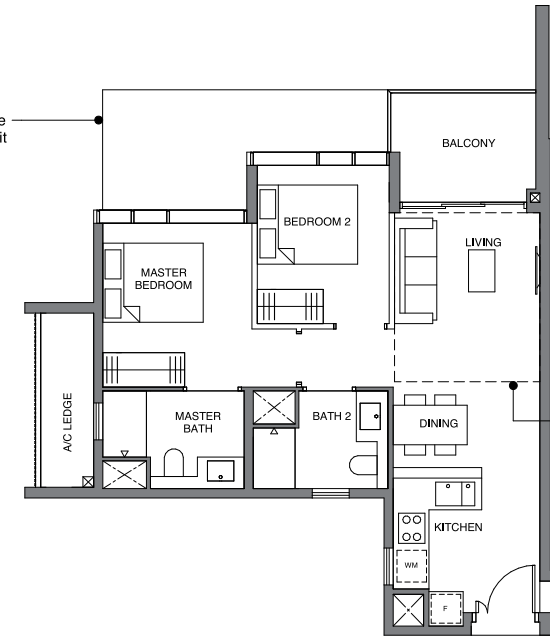
BLOCK 32
#02-27 to #11-27

TYPE B4-R
75 sqm | 807 sq ft

Incl. of 10 sq m | 108 sq ft of void area (high ceiling) above living

BLOCK 32
#12-27

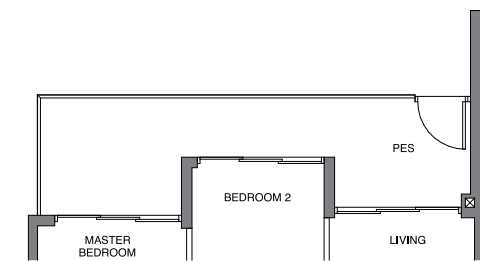
Lines denote ledge for unit #02-27



Dotted line denotes high ceiling above living room for Type B4-R, B4a-R and B4b-R

TYPE B4-P
74 sqm | 797 sq ft

BLOCK 32
#01-27



TYPE B4a
65 sqm | 700 sq ft

BLOCK 32
#02-26* to #11-26*

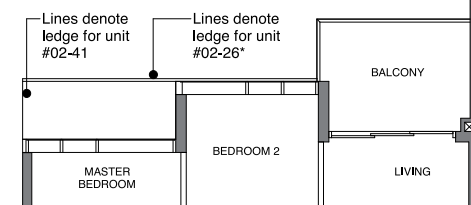
BLOCK 34
#04-41 to #11-41

TYPE B4a-R
75 sqm | 807 sq ft

Incl. of 10 sq m | 108 sq ft of void area (high ceiling) above living

BLOCK 32
#12-26*

BLOCK 34
#12-41



Lines denote ledge for unit #02-41

Lines denote ledge for unit #02-26*

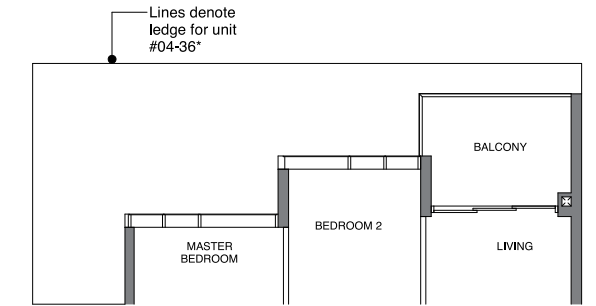
TYPE B4b
65 sqm | 700 sq ft

BLOCK 34
#04-36* to #11-36*

TYPE B4b-R
75 sqm | 807 sq ft

Incl. of 10 sq m | 108 sq ft of void area (high ceiling) above living

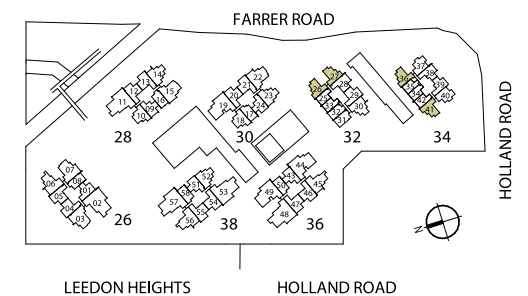
BLOCK 34
#12-36*



Lines denote ledge for unit #04-36*

DB/ST: Distribution Board / Storage
F: Fridge
WM: Washer Cum Dryer
* Denotes mirror image

Area includes PES, A/C ledge, balcony and void area (high ceiling). The plans are subject to change as may be required or approved by the relevant authorities. Areas are approximate measurements only and are subject to final survey. Plans are not drawn to scale and do not form part of the contract.



TYPE B5
66 sqm | 710 sq ft

BLOCK 26
#03-04* to #12-04*
#03-05 to #12-05

BLOCK 28
#02-13 to #11-13

BLOCK 30
#02-21 to #11-21

BLOCK 32
#02-29 to #11-29

BLOCK 36
#02-47 to #12-47

BLOCK 38
#02-55 to #12-55

TYPE B5-R
78 sqm | 840 sq ft

Incl. of 12 sq m | 129 sq ft of void area
(high ceiling) above living & dining

BLOCK 28
#12-13

BLOCK 30
#12-21

BLOCK 32
#12-29

TYPE B5-P
72 sqm | 775 sq ft

BLOCK 30
#01-21

BLOCK 32
#01-29

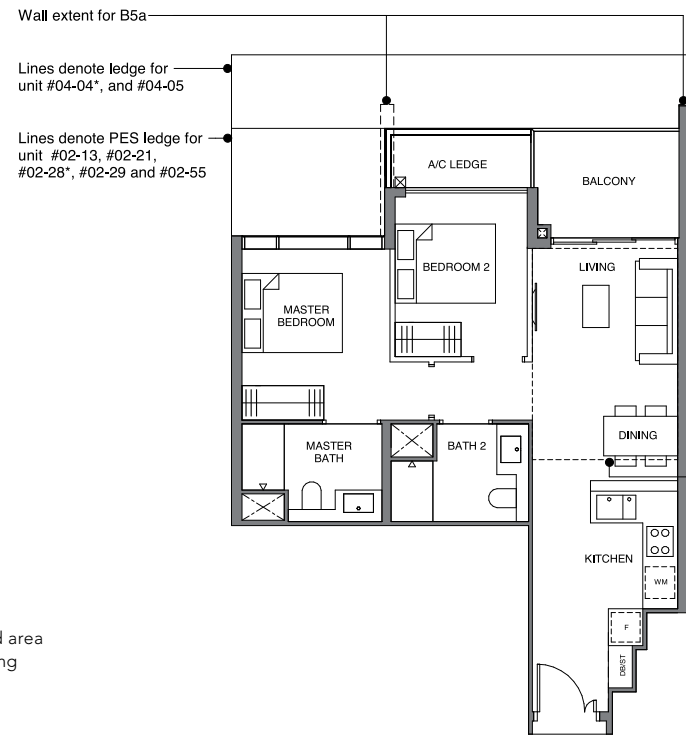
BLOCK 38
#01-55

TYPE B5a-P
72 sqm | 775 sq ft

BLOCK 32
#01-28*

TYPE B5-P
72 sqm | 775 sq ft

BLOCK 28
#01-13



TYPE B5a
66 sqm | 710 sq ft

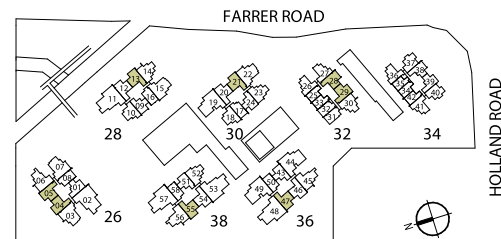
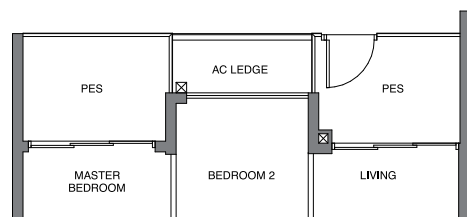
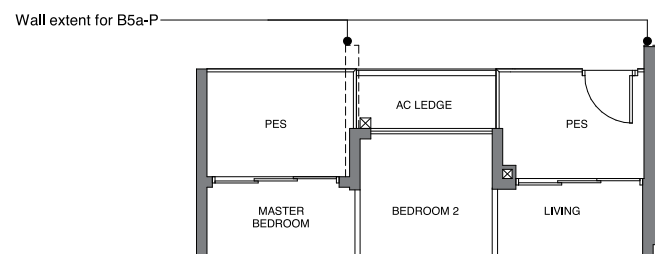
BLOCK 32
#02-28* to #11-28*

TYPE B5a-R
78 sqm | 840 sq ft

Incl. of 12 sq m | 129 sq ft of void area
(high ceiling) above living & dining

BLOCK 32
#12-28*

Dotted line denotes high ceiling
above living & dining room for
Type B5-R and B5a-R



DB/ST: Distribution Board / Storage
F: Fridge
WM: Washer Cum Dryer
* Denotes mirror image

Area includes PES, A/C ledge, balcony and void area (high ceiling). The plans are subject to change as may be required or approved by the relevant authorities. Areas are approximate measurements only and are subject to final survey. Plans are not drawn to scale and do not form part of the contract.

LEEDON HEIGHTS HOLLAND ROAD

TYPE B5b
66 sqm | 710 sq ft

BLOCK 28
#02-12 to #11-12

BLOCK 30
#02-20 to #11-20

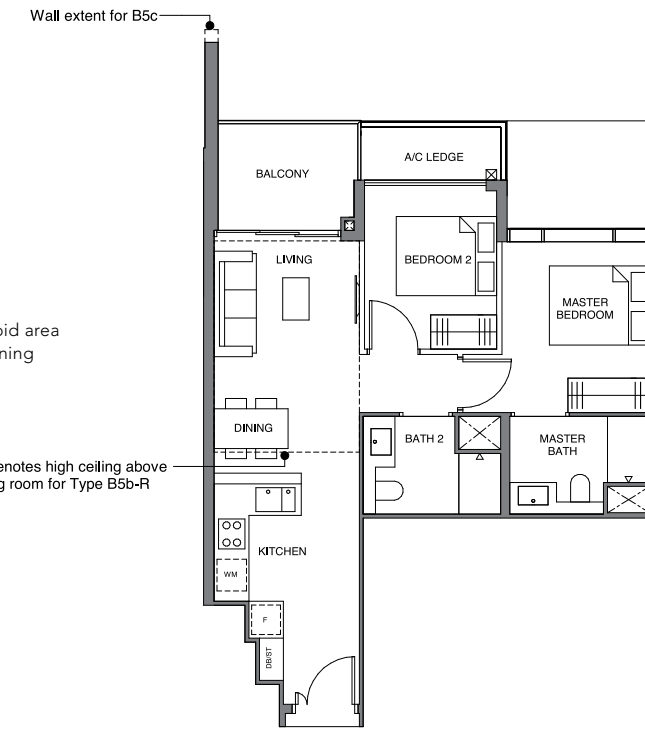
TYPE B5b-R
78 sqm | 840 sq ft

Incl. of 12 sq m | 129 sq ft of void area
(high ceiling) above living & dining

BLOCK 28
#12-12

BLOCK 30
#12-20

Dotted line denotes high ceiling above
living & dining room for Type B5b-R

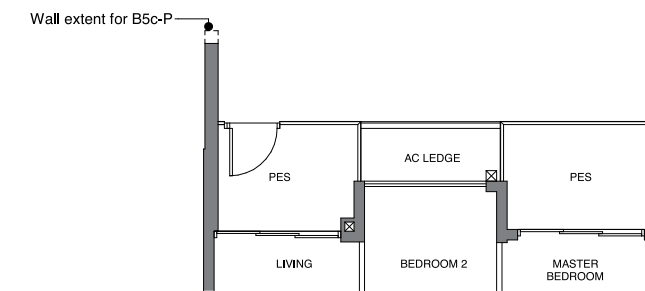


TYPE B5b-P
72 sqm | 775 sq ft

BLOCK 30
#01-20

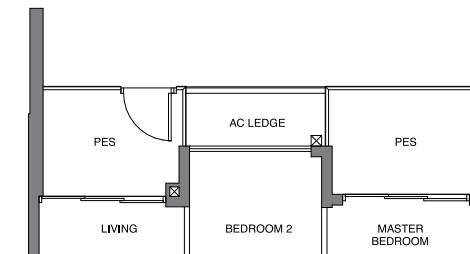
TYPE B5c-P
72 sqm | 775 sq ft

BLOCK 38
#01-54



TYPE B5b-P
72 sqm | 775 sq ft

BLOCK 28
#01-12

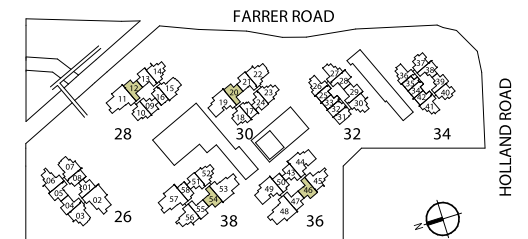


TYPE B5c
66 sqm | 710 sq ft

BLOCK 36
#02-46 to #12-46

BLOCK 38
#02-54 to #12-54

Lines denote ledge for unit #02-12,
#02-20 and #02-54



DB/ST: Distribution Board / Storage
F: Fridge
WM: Washer Cum Dryer
* Denotes mirror image

Area includes PES, A/C ledge, balcony and void area (high ceiling). The plans are subject to change as may be required or approved by the relevant authorities. Areas are approximate measurements only and are subject to final survey. Plans are not drawn to scale and do not form part of the contract.

LEEDON HEIGHTS HOLLAND ROAD

[2卧 + 书房]

TYPE BS1
76 sqm | 818 sq ft

BLOCK 30
#02-23* to #11-23*

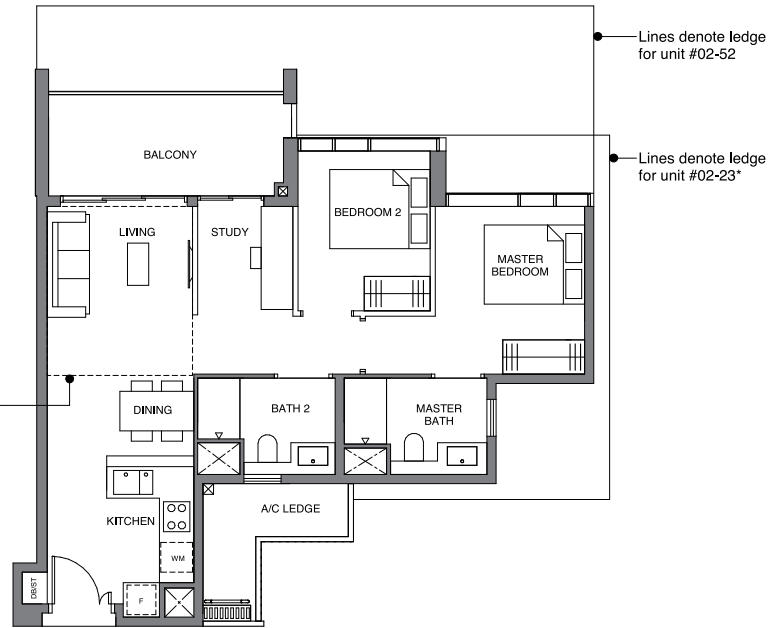
BLOCK 38
#02-52 to #12-52

TYPE BS1-R
86 sqm | 926 sq ft

Incl. of 10 sq m | 108 sq ft of void area (high ceiling) above living

BLOCK 30
#12-23*

Dotted line denotes high ceiling above living room for Type BS1-R and BS1a-R



TYPE BS1a
76 sqm | 818 sq ft

BLOCK 28
#02-14 to #11-14

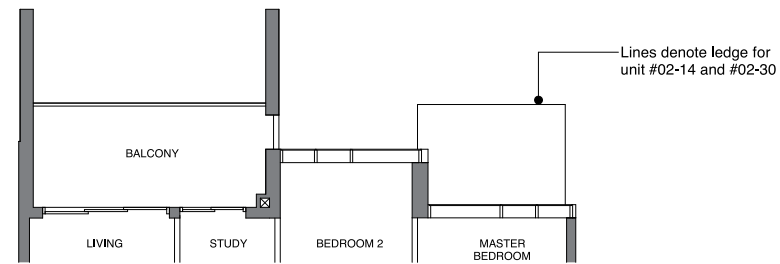
BLOCK 32
#02-30 to #11-30

TYPE BS1a-R
86 sqm | 926 sq ft

Incl. of 10 sq m | 108 sq ft of void area (high ceiling) above living

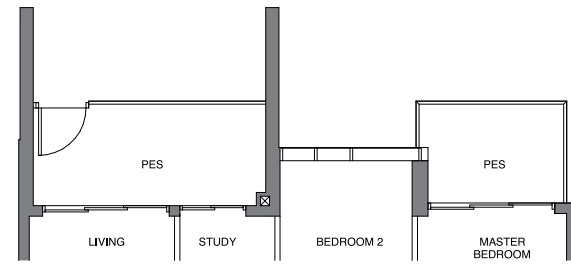
BLOCK 28 #12-14

BLOCK 32 #12-30



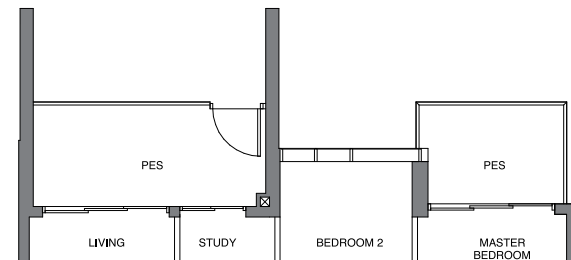
TYPE BS1a-P
81 sqm | 872 sq ft

BLOCK 28
#01-14



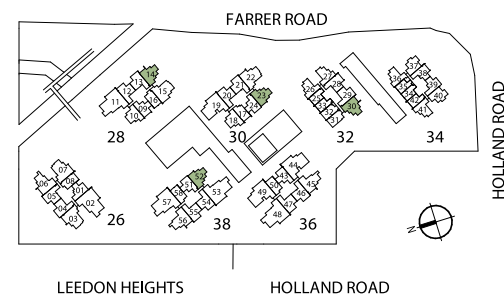
TYPE BS1a-P
81 sqm | 872 sq ft

BLOCK 32
#01-30



DB/ST: Distribution Board / Storage
F: Fridge
WM: Washer Cum Dryer
* Denotes mirror image

Area includes PES, A/C ledge, balcony and void area (high ceiling). The plans are subject to change as may be required or approved by the relevant authorities. Areas are approximate measurements only and are subject to final survey. Plans are not drawn to scale and do not form part of the contract.



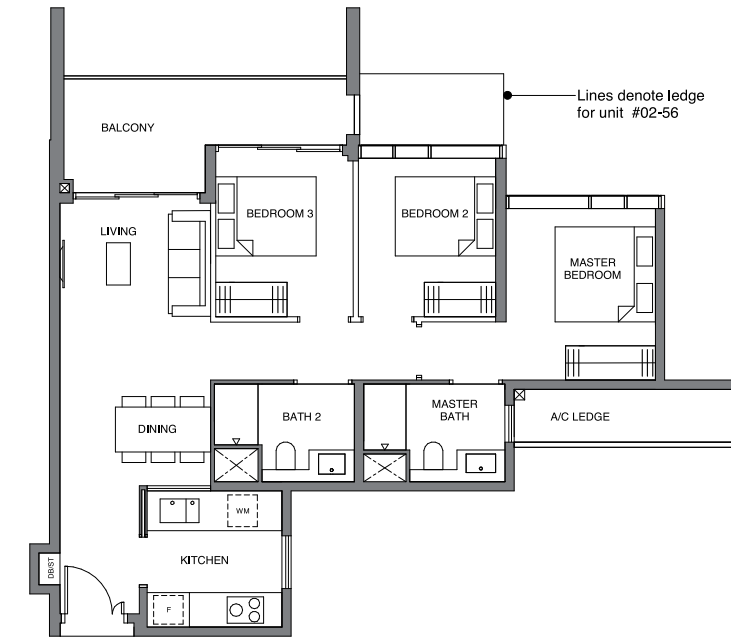
[3卧]

TYPE C1
89 sqm | 958 sq ft

BLOCK 26
#03-06 to #12-06

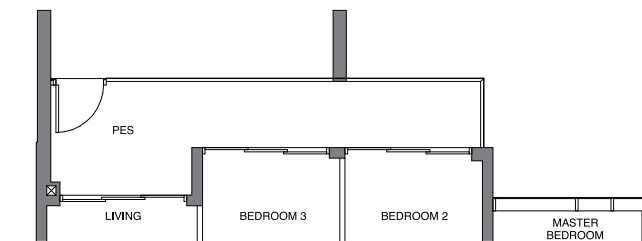
BLOCK 36
#02-45* to #12-45*

BLOCK 38
#02-56 to #12-56



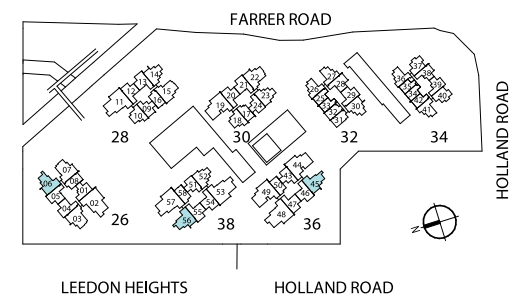
TYPE C1-P
92 sqm | 990 sq ft

BLOCK 38
#01-56



DB/ST: Distribution Board / Storage
F: Fridge
WM: Washer Cum Dryer
* Denotes mirror image

Area includes PES, A/C ledge, balcony and void area (high ceiling). The plans are subject to change as may be required or approved by the relevant authorities. Areas are approximate measurements only and are subject to final survey. Plans are not drawn to scale and do not form part of the contract.



[高级 3 卧]

TYPE C2
97 sqm | 1044 sq ft

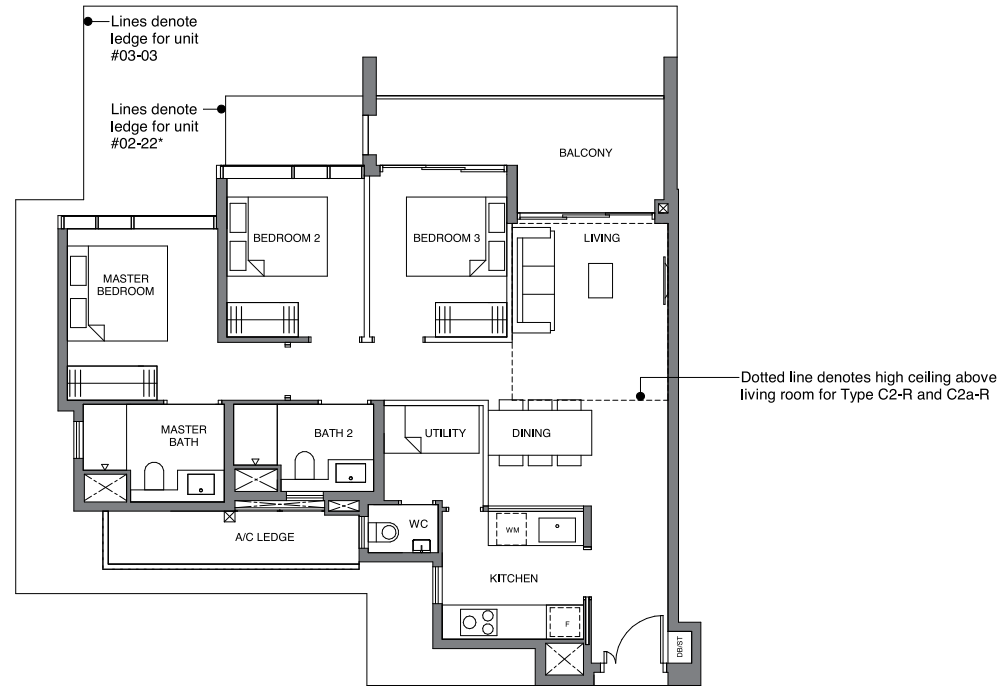
BLOCK 26
#03-03 to #12-03

BLOCK 30
#02-22* to #11-22*

TYPE C2-R
108 sqm | 1163 sq ft

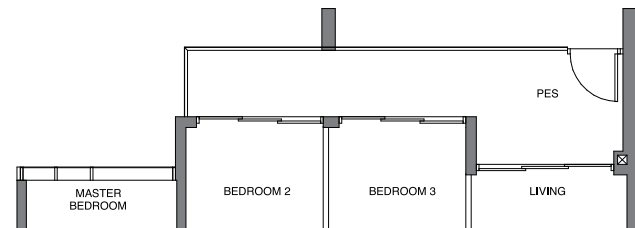
Incl. of 11 sq m | 118 sq ft of void area (high ceiling) above living

BLOCK 30
#12-22*



TYPE C2-P
100 sqm | 1076 sq ft

BLOCK 30
#01-22*



TYPE C2a
97 sqm | 1044 sq ft

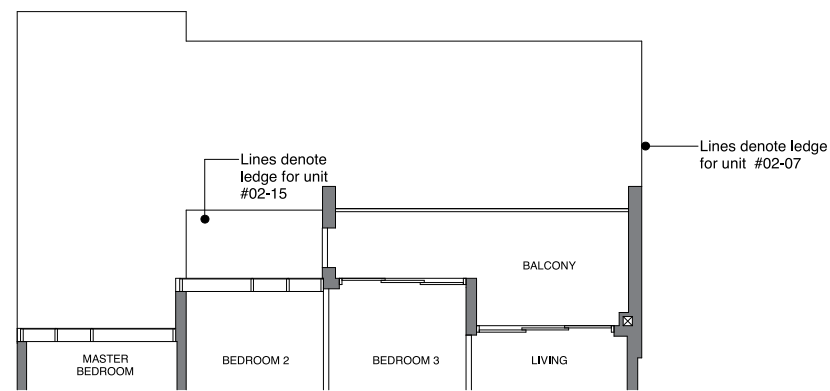
BLOCK 26
#02-07 to #12-07

BLOCK 28
#02-15 to #11-15

TYPE C2a-R
108 sqm | 1163 sq ft

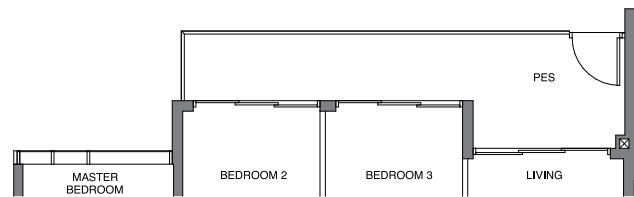
Incl. of 11 sq m | 118 sq ft of void area (high ceiling) above living

BLOCK 28
#12-15



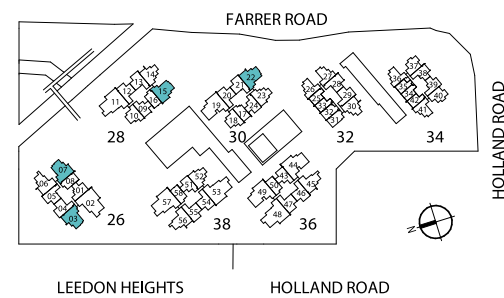
TYPE C2a-P
100 sqm | 1076 sq ft

BLOCK 28
#01-15



DB/ST: Distribution Board / Storage
F: Fridge
WM: Washer Cum Dryer
* Denotes mirror image

Area includes PES, A/C ledge, balcony and void area (high ceiling). The plans are subject to change as may be required or approved by the relevant authorities. Areas are approximate measurements only and are subject to final survey. Plans are not drawn to scale and do not form part of the contract.



[豪华 3 卧]

TYPE C3
126 sqm | 1356 sq ft

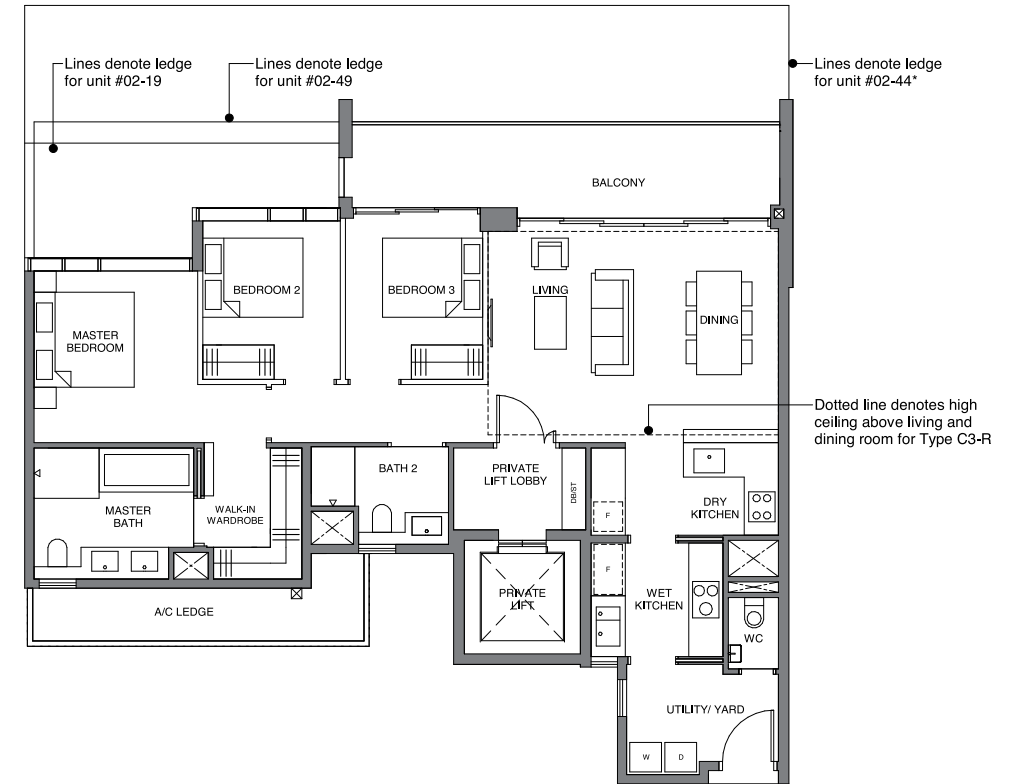
BLOCK 30
#02-19 to #11-19

BLOCK 36
#02-44* to #12-44*
#02-49 to #12-49

TYPE C3-R
149 sqm | 1604 sq ft

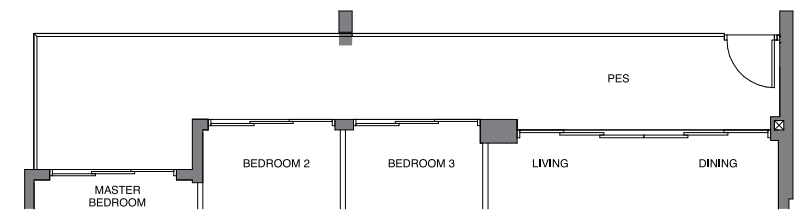
Incl. of 23 sq m | 248 sq ft of void area (high ceiling) above living & dining

BLOCK 30
#12-19



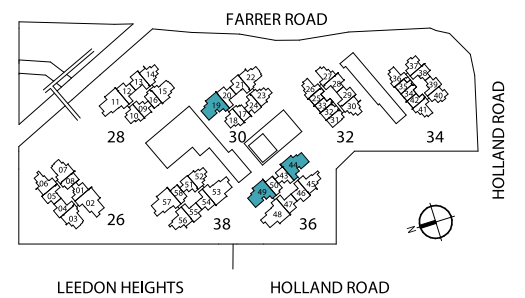
TYPE C3-P
138 sqm | 1485 sq ft

BLOCK 30
#01-19



D: Dryer
DB/ST: Distribution Board / Storage
F: Fridge
W: Washer
* Denotes mirror image

Area includes PES, A/C ledge, balcony and void area (high ceiling). The plans are subject to change as may be required or approved by the relevant authorities. Areas are approximate measurements only and are subject to final survey. Plans are not drawn to scale and do not form part of the contract.



[豪华 4 卧]

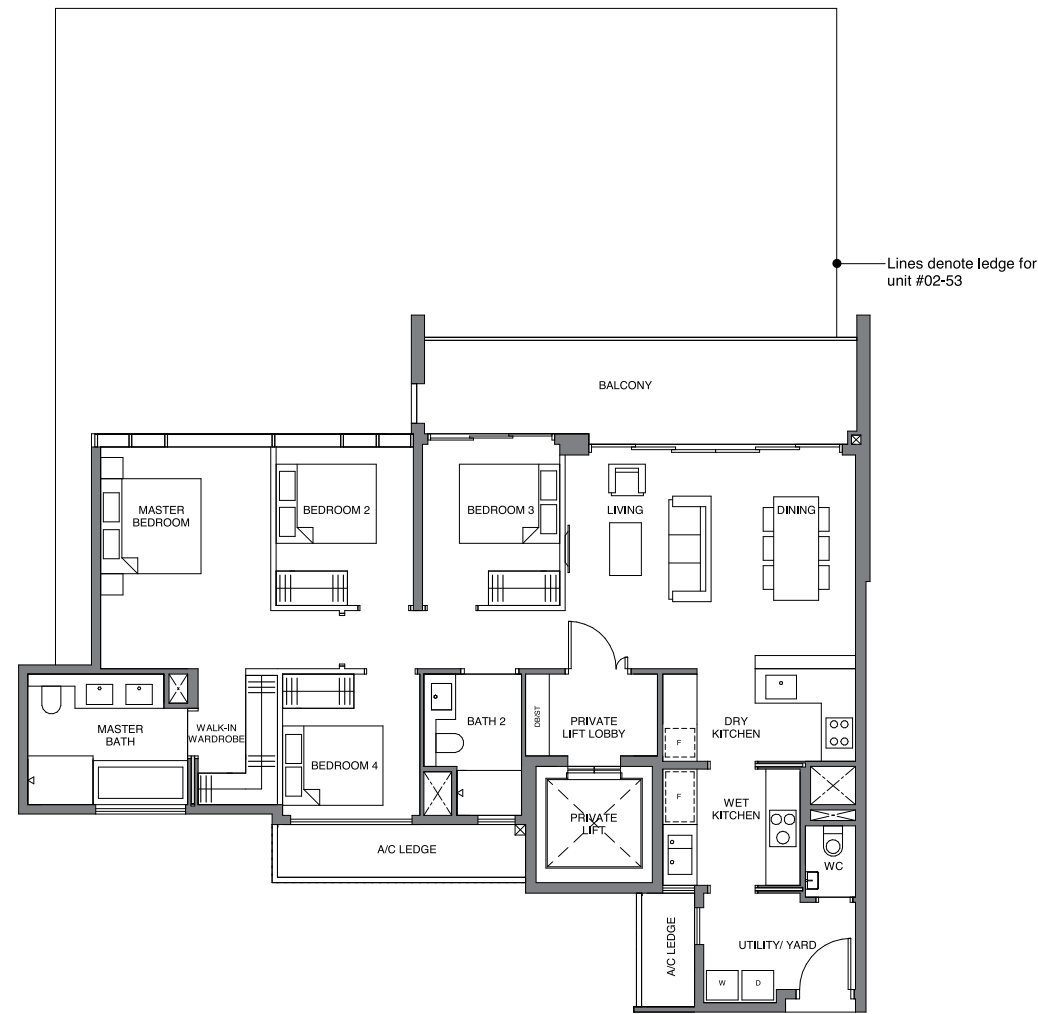
[豪华 4 卧]

TYPE D1
139 sqm | 1496 sq ft

BLOCK 26
#02-02* to #12-02*

BLOCK 36
#02-48* to #12-48*

BLOCK 38
#02-53 to #12-53
#02-57 to #12-57



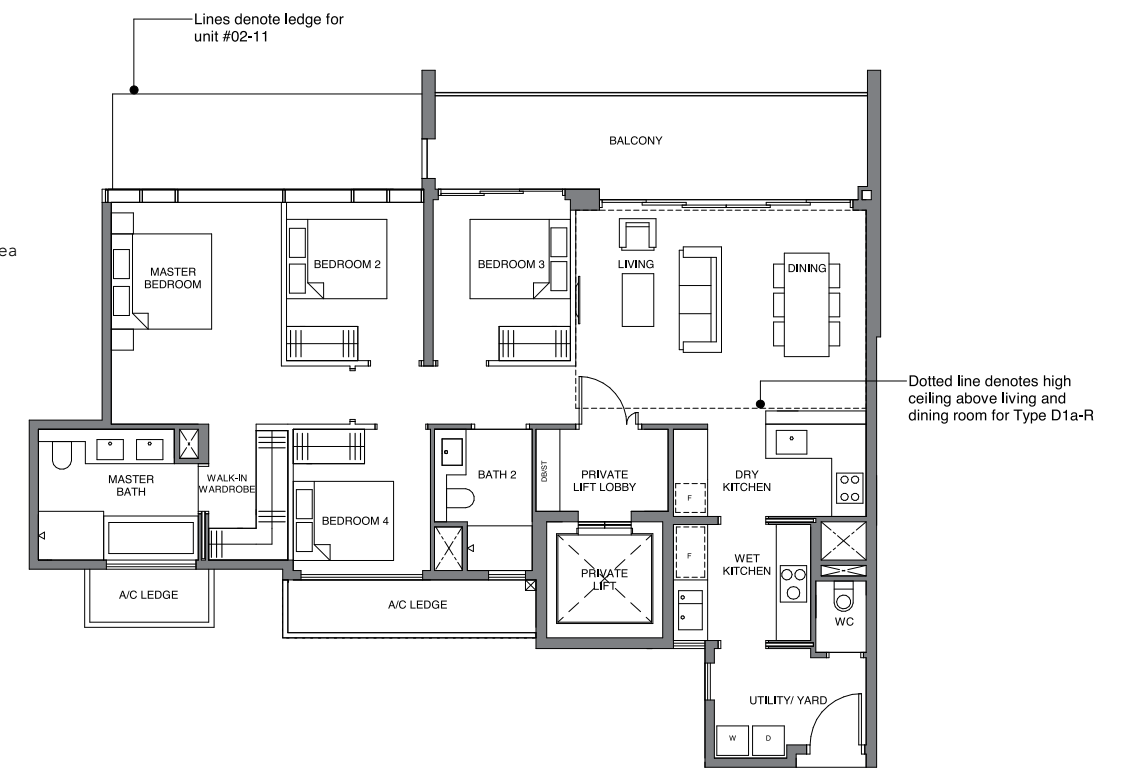
TYPE D1a
139 sqm | 1496 sq ft

BLOCK 28
#02-11 to #11-11

TYPE D1a-R
162 sqm | 1744 sq ft

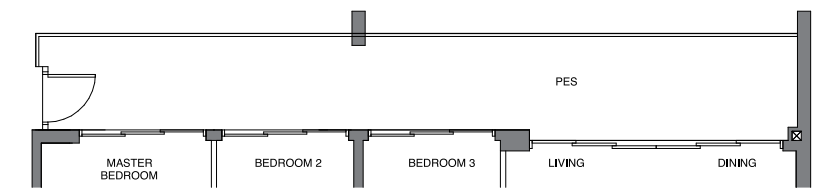
Incl. of 23 sq m | 248 sq ft of void area (high ceiling) above living & dining

BLOCK 28
#12-11



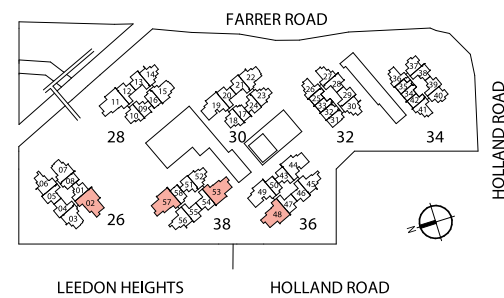
TYPE D1a-P
150 sqm | 1615 sq ft

BLOCK 28
#01-11



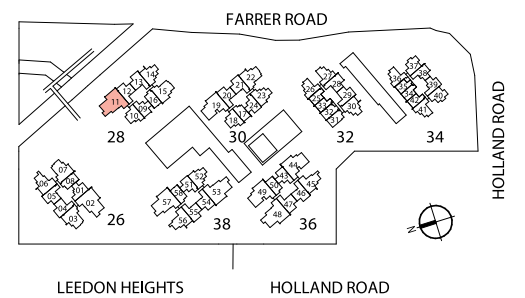
D: Dryer
DB/ST: Distribution Board / Storage
F: Fridge
W: Washer
* Denotes mirror image

Area includes PES, A/C ledge, balcony and void area (high ceiling). The plans are subject to change as may be required or approved by the relevant authorities. Areas are approximate measurements only and are subject to final survey. Plans are not drawn to scale and do not form part of the contract.



D: Dryer
DB/ST: Distribution Board / Storage
F: Fridge
W: Washer
* Denotes mirror image

Area includes PES, A/C ledge, balcony and void area (high ceiling). The plans are subject to change as may be required or approved by the relevant authorities. Areas are approximate measurements only and are subject to final survey. Plans are not drawn to scale and do not form part of the contract.





MCL Land

MCL Land是住宅行业内领先的开发商并在追求卓越的过程中不断创新。作为一个高端并享有盛名的集团公司，我们承诺带给客户最大的满意度并不断提升股东价值增长。

过去50年中，MCL Land在新加坡和马来西亚积累了高品质住宅建设管理的声誉。MCL Land是怡和集团成员，母公司为香港置地。

集团在香港、新加坡、马来西亚、中国、越南、菲律宾和泰国开发管理了众多住宅项目。重要的开发项目包括：The Estuary, UBER 388, Este Villa, Terrasse, Palms @ Sixth Avenue, Hallmark Residences, 涟漪湾, J Gateway, LakeVille, Sol Acres, 景悦苑和Margaret Ville。

绿墩雅苑是我公司最新的开发项目，它概述了我公司一贯对满意客户的承诺：建造高质量的家，超出客户的期望。



强强联合，再创佳作

杭州智慧城项目，为仁恒置地进军杭州市场的开山之作，并由香港置地与Transfer集团首次联手打造。杭州智慧城位于萧山创新科技园中心位置。作为杭州大湾区的先行者，智慧城被认定为重要的国际化住宅区。这一新规划旨在吸引全球教育、医疗、服务和技术研发行业来到杭州，使杭州成为中国重点技术中心。

杭州湾已规划830万平方米的区域以建造高层公寓，联排别墅，街边商铺，零售商场，医院和酒店。毗邻主广道，紧邻城市地铁线，其被定位为高级综合商业区。用最优质的服务定制化生活方式，以满足跨国企业将区域总部搬迁至杭州的各项需求、快的合作经验促成了双方再一次的合作。绿墩雅苑将卓越发挥到极致，在各个层面完美展现生活最高品质。



仁恒置地
YANLORD LAND



Yanlord Land Group Limited

仁恒置地是一家位于中国和新加坡的房地产开发商，致力于开发一线以及成长型城市内高端全装住宅，商用以及综合性项目。仁恒置地于2006年在新加坡证券交易所上市。

仁恒置地自1993年打开中国市场以来，已成功地在上海和南京开发了多个大型住宅类房地产项目，吸引了大量国际化社区居民入住。项目包括上海市的仁恒滨江园、仁恒河滨城和仁恒世纪公寓与南京市的绿洲新岛花园、仁恒江湾城和仁恒国际公寓等。“仁恒”品牌已经成为中国房地产行业一个质量标杆品牌。当前，仁恒在中国5个主要经济区15个经济高速增长城市均有项目涉猎。如：长三角地区——上海，南京，苏州，杭州，和南通；西部地区——成都；环渤海区域——天津，唐山和济南；华南地区——深圳，珠海和中山；海南省——海口和三亚；中国中部地区——武汉。

仁恒置地也在积极拓展商业地产开发项目并已初裁钟声见有成效。目前已完成了零售商店，办公室，酒店及服务类住宅等项目的施工建设。这些项目预期将为仁恒置地带来稳定的租金收入以及资产价值的增长。

**“我们的理念是，不计较一时的得失，而要专注于经营，
打造一家世代相传的百年之业。”**

钟声坚
仁恒置地董事局
主席兼总裁

OFFICIAL MARKETING AGENCY

Huttons[®]
The Agency of Choice

HUTTONS ASIA PTE LTD

ESTATE AGENT LICENCE NO.: L3008899K

MCL Land
A Hongkong Land company

One Raffles Quay #22-10
South Tower
Singapore 048583
www.mcland.com.sg

仁恒置地
YANLORD LAND

9 Temasek Boulevard #36-02
Suntec Tower Two
Singapore 038989
www.yanlordland.com

Developer: Asia Radiant Pte Ltd • Company Registration No.: 201811652Z • Developer Licence No.: C1358 • Land Tenure: Estate in Fee Simple • Encumbrances: Mortgage No. IF/584825L and IF/832968J in favour of United Overseas Bank Limited • Land description: MK02 Lots 00937V, 00938P, 02337A, 02338K, 02646Y, 02649A, 02650P & 02682T at Holland Road, Leedon Heights and Farrer Road • Expected Date of Vacant Possession: 31 March 2024 • Expected Date of Legal Completion: 31 March 2027

在准备此宣传册，和在建造模型和样板房时，开发商和其代理公司竭尽全力将各细节考虑在内，但是开发商和代理不会为任何失误或者疏漏负责。视觉的呈现、模型、样板房展示和图示、照片、艺术图片以及其他图形展示和资料仅仅为了描绘开发项目和室内装饰，不能被认定为实际的情况。所有的面积和其他测量均为大致测量，实际情况以最终调查为准。此开发项目以相关部门验收为准，以保证符合目前的行业规则。所有的信息、参数、图片渲染、视觉呈现和平面图等正在出版，以开发商或者相关部门的要求为准。可能会产生变更。所有的陈述被认为是正确的，但是不能被认定为实际情况的说明或陈述。所有的平面图和模型不按实际比例制作，除非有特别说明，经相关部门批准，可能会进行修改。买卖合同协议将说明开发商和购房者之间所有的协议，并且取代签署买卖合同之前所有的说明、描述、或者承诺，不得由开发商或者代理商在买卖合同之外对说明、描述或者承诺进行任何修改。